

**21%**  
IRR Deduction

Prime location

Fully designer-furnished

Freehold with solid return

Highly accessible

Low density, 3-tiered security & premium facilities

THE **5** ELEMENTS FOR PROSPEROUS LIVING

**VUE**  
RESIDENCES • SERVICED SUITES



# VUE

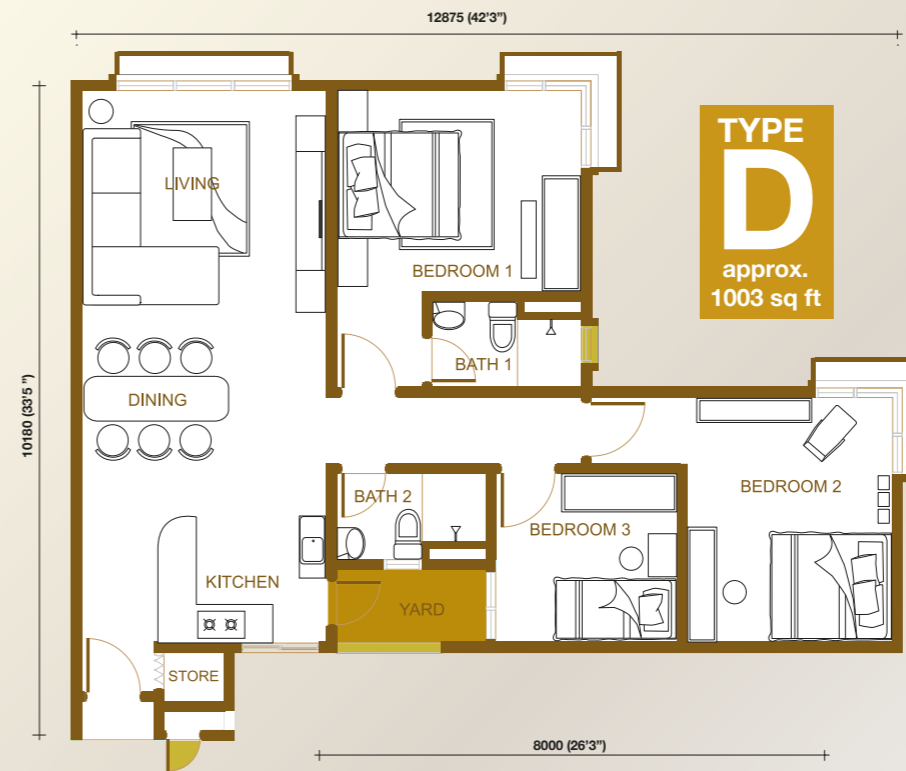
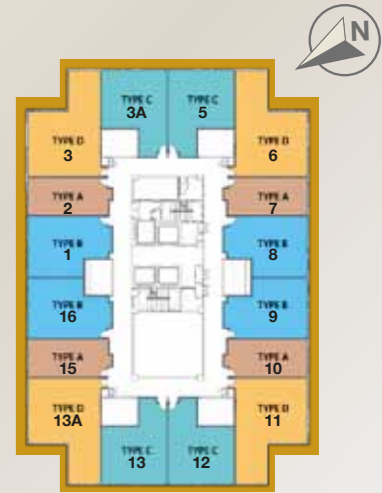
RESIDENCES • SERVICED SUITES

Standing tall on one of the premier addresses in Kuala Lumpur city centre, VUE Residences is the perfect investment for prosperous living. It offers a balance for functional and affluent lifestyle in the form of the 5 elements for prosperous living.

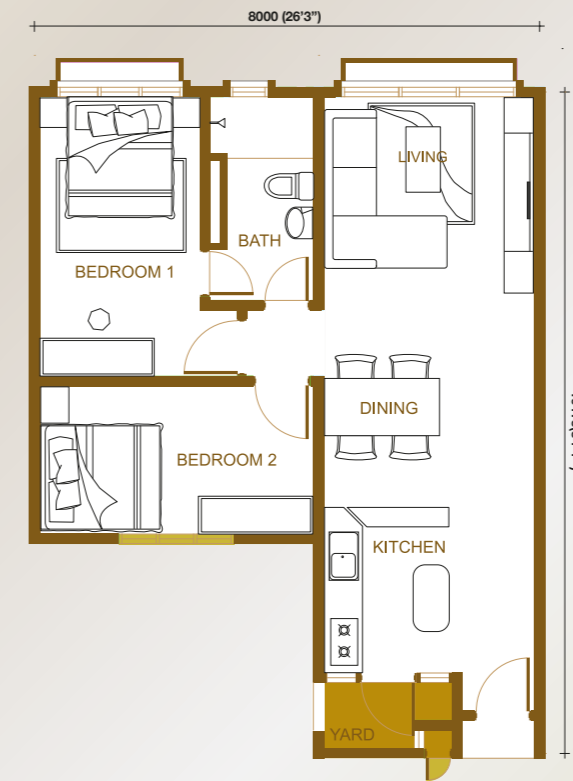
From **726 to 1003 sq ft**

## Floor Plan

Type D, C & B. Only 50 units left.



**TYPE C**  
approx. 737 sq ft



**TYPE B**  
approx. 726 sq ft

## THE 5 ELEMENTS FOR PROSPEROUS LIVING

# 5



### FREEHOLD WITH SOLID RETURN

21% Immediate Rental Return (IRR) discount allows you to enjoy greater future returns.

### LOW DENSITY, 3-TIERED SECURITY & PREMIUM FACILITIES

Get peace of mind with 3-tiered security system at the main entrance, car park and lift lobby and enjoy exquisite club house facilities such as swimming pool, gym and rooftop garden.

### PRIME LOCATION

Just a stone's throw away to KL's famous landmarks such as KLCC, Bukit Bintang, Titiwangsa Lake Gardens and KL's Golden Triangle. Plus, it is strategically located at the heart of the city's medical hub which includes the General Hospital, Private Hospitals and the National Heart Institute.



### FULLY DESIGNER-FURNISHED

Styled and furnished by professional designer with furniture and decors ready for moving in anytime.



### HIGHLY ACCESSIBLE

Well connected via the various highways and public transportation systems. Just a few minutes walk to the nearest LRT and Monorail stations.

\*Images and artists impressions are for illustration purposes only

Living Room

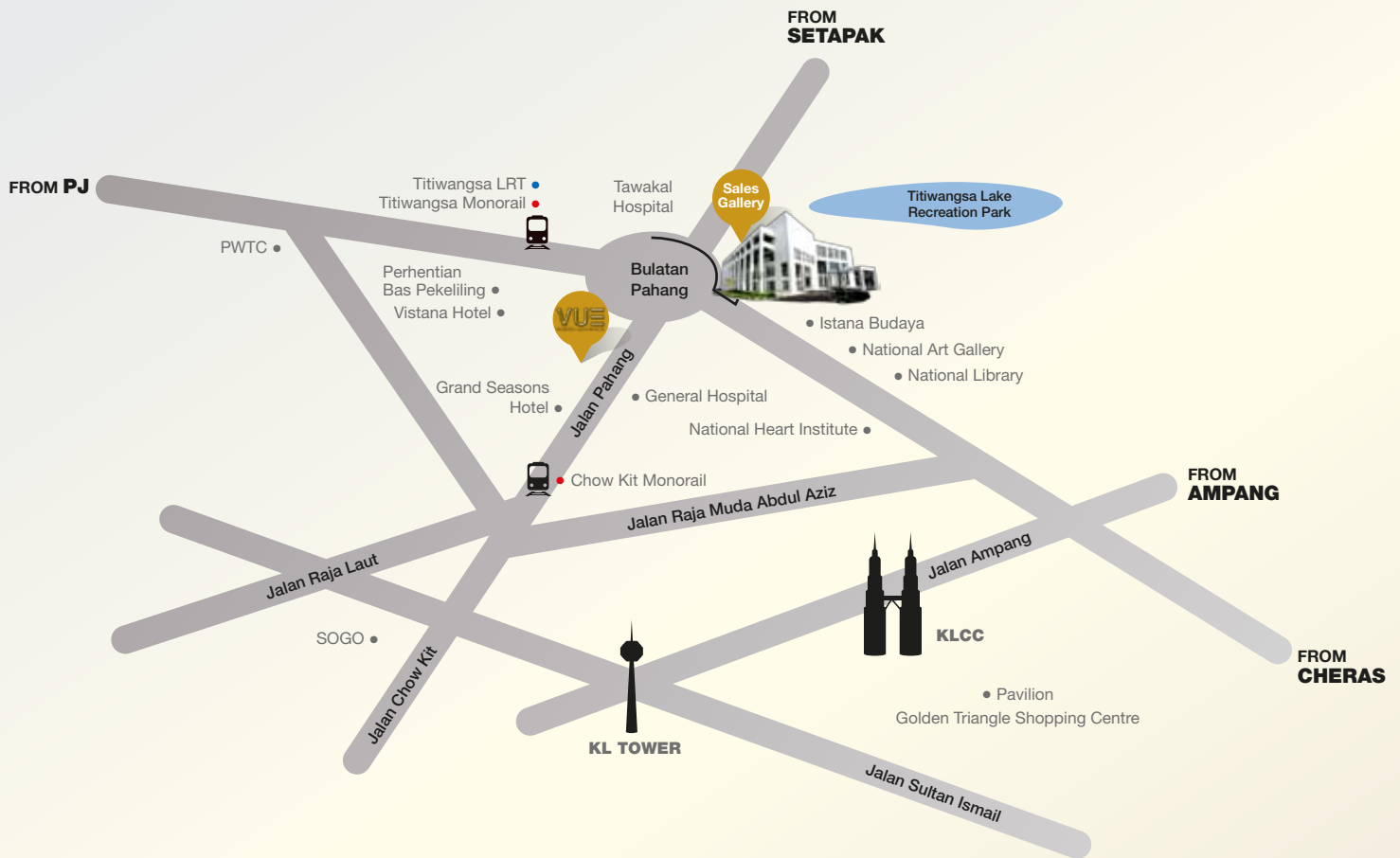


Master Bedroom



Kitchen





### VUE RESIDENCES

GPS Coordinates  
3°10'27.00"N, 101°42'03.00"E



### SALES GALLERY

GPS Coordinates  
3.1687 N, 101.6999 E



Another Prestigious Project Developed by:



#### Sales gallery:

**Medical Academies of Malaysia**  
G2, No.210, Jalan Tun Razak,  
50400 Kuala Lumpur.

#### Developer:

**Tanah Perangsang Sdn Bhd (538766-X)**  
83&85, Jalan SS 15/4C,  
47500 Subang Jaya,  
Selangor Darul Ehsan.

Exclusive Independent Consultant:  
**JR Management Consultancy (001858649T)**

**03 4021 3440**  
**018 669 2228**

[www.vueresidences.com.my](http://www.vueresidences.com.my)

**Developer:** Tanah Perangsang Sdn Bhd (538766-X) **Address:** 83 & 85, Jalan SS 15/4C, 47500 Subang jaya, Selangor Darul Ehsan, Malaysia **Developer License:** 10786-1/09-2015/1020  
**Validity Period:** 06/09/2010 – 05/09/2015 **Advertising Permit No.:** 10786-1/2335/2012(11) **Validity Period:** 09/11/2011 – 08/11/2012 **Land Tenure:** Freehold **Land Encumbrances:** Bank Kerjasama Rakyat Malaysia Berhad **Building Plan Approving Authority:** DBKL **Building Plan Reference:** BP T32008 0014 **Expected Date Of Completion:** Dec 2013 **Total Of Units:** 272 Units **Type Of Property:** Serviced Apartment **Price:** (Min) RM 679,800.00 **Total Car Park Bays:** 340 Bays. All drawings & illustrations contained herein are artist's impression only and subject to change as may be required to relevant authorities and/or the developer's architect and cannot form part of an offer contract.